

BATHROOM FURNITURE, VANITY UNIT FOR WASHBASIN, SINK VANITIES
VENTICELLO

PRODUCT INFORMATION

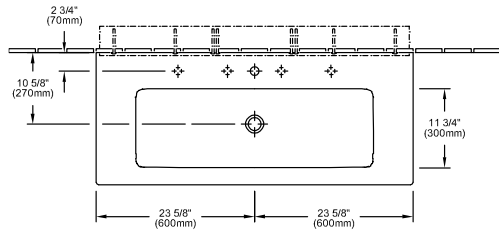
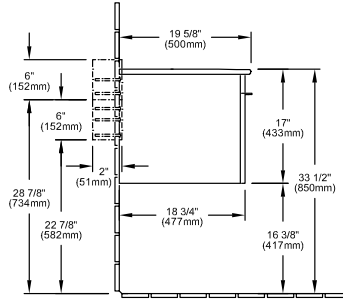
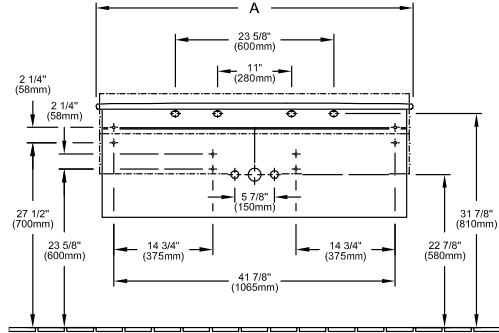


| | |
|---------------------|---|
| Model | A938U1 |
| Width | 45 3/8" inch |
| Height | 16 1/2" inch |
| Depth | 19 3/4" inch |
| Weight | 98,1 lbs |
| Description | <p>Wood</p> <p>Fastening set</p> <p>Handles: handle Chrome</p> <p>Equipped with: 2 x Accessories package 1, 2 pull-out compartments with non-slip mat</p> <p>For combination with: vanity washbasin Venticello 4104 U1 / U2</p> <p>Front: White Wood, Elm Impresso, Oak Graphite (MDF, vinyled)</p> <p>Corpus: White Wood, Elm Impresso, Oak Graphite (particle board, melaminated)</p> <p>Handle (attached metal strip): Chrome Finish</p> <p>Pull-out element: fitted with Soft Closing feature</p> <p>Interior compartments: adjustable low and high glass divisions, plastic accessory boxes</p> <p>CARB Compliant materials (ATCM 93120_93120.12 Title 17)</p> <p>CARB P2</p> <p>soft closing</p> <p>fully assembled</p> <p>12 x wood screws RUKO-KS 1/4" / 2" (5,5/50 mm), 12 x UNI-dowel Nylon 3/8" x 1 5/8" (8x40 mm), 2 x pouch 3 15/16" x 7 7/8" (100x200 mm)</p> <p>C002 U4 00</p> |
| Installation | Wall-mounted |
| Material | Wood |
| Specification texts | <p>; Vanity Unit; Wood; Size: 45 3/8" x 16 1/2" x 19 3/4" (1153 x 420 x 502 mm); Wall-mounted; Fastening set; Equipped with: 2 x Accessories package 1, 2 pull-out compartments with non-slip mat; For combination with: vanity washbasin Venticello 4104 U1 / U2; Front: White Wood, Elm Impresso, Oak Graphite (MDF, vinyled)</p> <p>Corpus: White Wood, Elm Impresso, Oak Graphite (particle board, melaminated)</p> <p>Handle (attached metal strip): Chrome Finish</p> <p>Pull-out element: fitted with Soft Closing feature</p> <p>Interior compartments: adjustable low and high glass divisions, plastic accessory boxes; CARB Compliant materials (ATCM 93120_93120.12 Title 17)</p> <p>CARB P2; soft closing; fully assembled; 12 x wood screws RUKO-KS 1/4" / 2" (5,5/50 mm), 12 x UNI-dowel Nylon 3/8" x 1 5/8" (8x40 mm), 2 x pouch 3 15/16" x 7 7/8" (100x200 mm); C002 U4 00; Handles: handle Chrome</p> |

| | | |
|--------------|----------|---------------|
| White Wood | A938U1E8 | 4051202490911 |
| Oak Graphite | A938U1FQ | 4051202490935 |
| Elm Impresso | A938U1PN | 4051202490928 |

TECHNICAL DRAWINGS

A938U1



A938 U1 XX - 4104 U1/U2 | A
47 1/4" | 1200 mm

- + Indicate location for inwall support bracket
- + Dimensions taken from finished floor level
- + Sink not included
- Wall mounting