

BATHROOM FURNITURE, VANITY UNIT FOR WASHBASIN, SINK VANITIES
VENTICELLO

PRODUCT INFORMATION

1 . POSITION



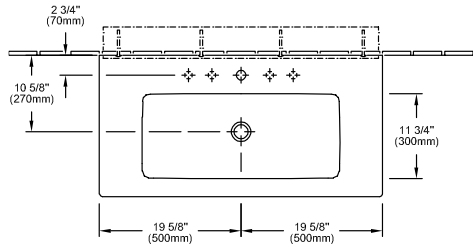
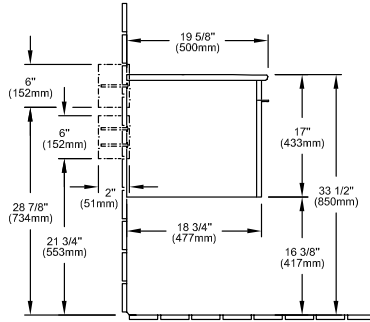
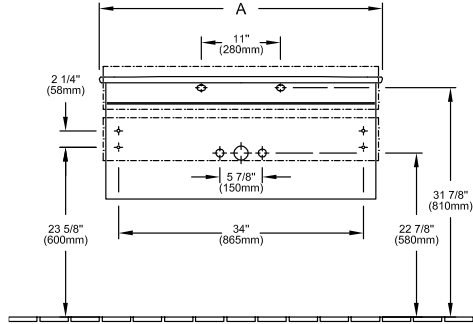
Model	A935U1
Width	37 1/2" inch
Height	16 1/2" inch
Depth	19 3/4" inch
Weight	52,91 lbs
Description	<p>Wood</p> <p>Fastening set</p> <p>Handles: handle Chrome</p> <p>Equipped with: 1 x Accessories package 1, 1 pull-out compartment with non-slip mat</p> <p>For combination with: vanity washbasin Venticello 4104 U3 / U4, 4134 U1 / U2 / U3 / U4</p> <p>Front: White Wood, Elm Impresso, Oak Graphite (MDF, vinylated)</p> <p>Corpus: White Wood, Elm Impresso, Oak Graphite (particle board, melaminated)</p> <p>Handle (attached metal strip): Chrome Finish</p> <p>Pull-out element: fitted with Soft Closing feature</p> <p>Interior compartments: adjustable low and high glass divisions, plastic accessory box</p> <p>CARB Compliant materials (ATCM 93120_93120.12 Title 17)</p> <p>CARB P2</p> <p>soft closing</p> <p>fully assembled</p> <p>2 x wood screw-RUKO-KS 1/4" / 2" (5,5/50 mm), 4 x UNI-dowel Nylon 3/8" x 1 5/8" (8x40 mm), 1 x pouch 3 15/16" x 7 7/8" (100x200 mm)</p> <p>C002 U4 00</p>
Installation	Wall-mounted
Material	Wood
Specification texts	<p>; Vanity Unit; Wood; Size: 37 1/2" x 16 1/2" x 19 3/4" (953 x 420 x 502 mm); Wall-mounted; Fastening set; Equipped with: 1 x Accessories package 1, 1 pull-out compartment with non-slip mat; For combination with: vanity washbasin Venticello 4104 U3 / U4, 4134 U1 / U2 / U3 / U4; Front: White Wood, Elm Impresso, Oak Graphite (MDF, vinylated)</p> <p>Corpus: White Wood, Elm Impresso, Oak Graphite (particle board, melaminated)</p> <p>Handle (attached metal strip): Chrome Finish</p> <p>Pull-out element: fitted with Soft Closing feature</p> <p>Interior compartments: adjustable low and high glass divisions, plastic accessory box; CARB Compliant materials (ATCM 93120_93120.12 Title 17)</p> <p>CARB P2; soft closing; fully assembled; 2 x wood screw-RUKO-KS 1/4" / 2" (5,5/50 mm), 4 x UNI-dowel Nylon 3/8" x 1 5/8" (8x40 mm), 1 x pouch 3 15/16" x 7 7/8" (100x200 mm); C002 U4 00; Handles: handle Chrome</p>

COLOURS

White Wood	A935U1E8	4051202490942
Oak Graphite	A935U1FQ	4051202490959
Elm Impresso	A935U1PN	4051202490966

TECHNICAL DRAWINGS

A935U1



A
A935 U1 XX - 4104 U3/U4 | 39 3/8" | 1000 mm

- Indicate location for Inwall support bracket
- + Dimensions taken from finished floor level
- + Slink not Included
- Wall mounting