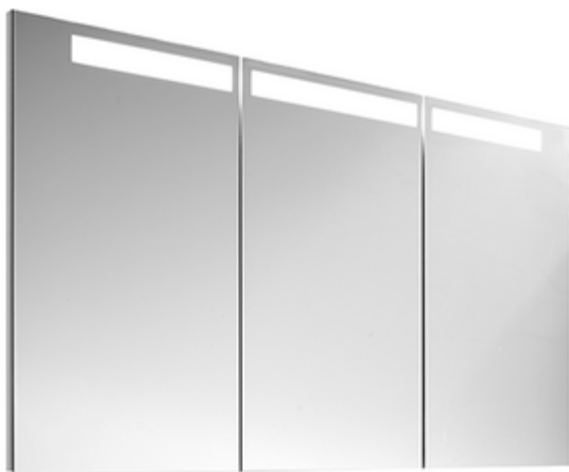


BATHROOM FURNITURE, MIRROR, MIRRORS/MIRROR CABINETS, MIRROR MEDICINE CABINETS PERCEPTION

PRODUCT INFORMATION

1 . POSITION



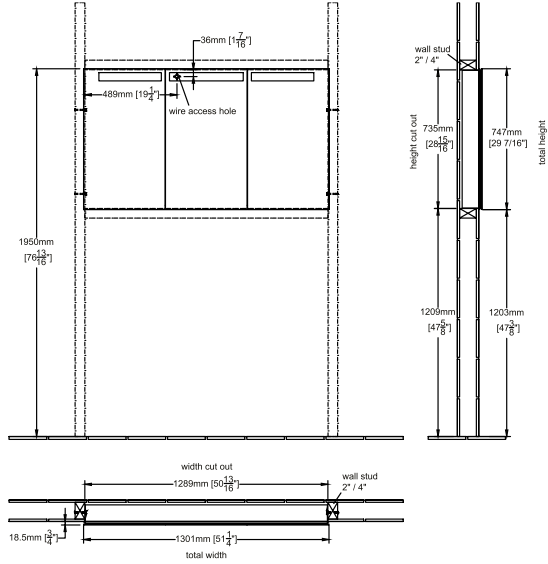
Model	A419U3
Width	51 1/4" inch
Height	29 3/8" inch
Depth	4 1/4" inch
Weight	74,52 lbs
Description	<p>Glass Fastening set integral LED lighting Equipped with: 3 mirrored doors, 6 adjustable glass shelves, 1 magnifying mirror, 1 magnetic strip, electric outlet and switch UL listed soft closing hinges fully assembled 4 x wood screw cylinder head KS 1/4" / 2 3/8" (5.5/60 mm), 4 x UNI-dowel polyamide F3/8" x 1 5/8" (F8 x 40 mm), 1 x pouch 3 15/16" x 9 3/8" (100x250 mm), 2 x mounting rail 4 15/16" (125 mm)</p>
Material	Glass
Specification texts	<p>; +; Recessed medicine cabinet; Glass; Size: 51 1/4" x 29 3/8" x 4 1/4" (1301 x 747 x 107 mm); Fastening set; integral LED lighting; Equipped with: 3 mirrored doors, 6 adjustable glass shelves, 1 magnifying mirror, 1 magnetic strip, electric outlet and switch; UL listed; soft closing hinges; fully assembled; 4 x wood screw cylinder head KS 1/4" / 2 3/8" (5.5/60 mm), 4 x UNI-dowel polyamide F3/8" x 1 5/8" (F8 x 40 mm), 1 x pouch 3 15/16" x 9 3/8" (100x250 mm), 2 x mounting rail 4 15/16" (125 mm)</p>

COLOURS

A419U300 4051202378486

TECHNICAL DRAWINGS

A419U3



N L 110 - 120 V mains connection, loose
 The product is designed for connection through an UL listed metal conduit with nominal trade size of 1/2".
 The product shall be supplied through an UL listed cord rated minimum 300 V, 5 x 14 AWG, 60°C / 140°F and solid copper conductor only.

Wall mounting

+ Dimensions taken from finished floor level