

## WASHBASINS, WASHBASIN (BASIN ONLY), WALL SINKS LA BELLE

---

### PRODUCT INFORMATION

---

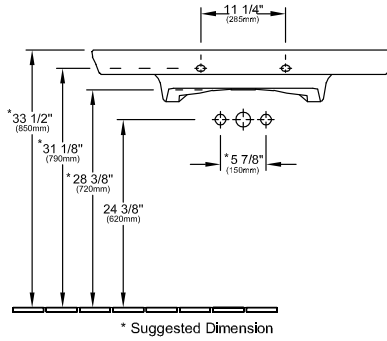
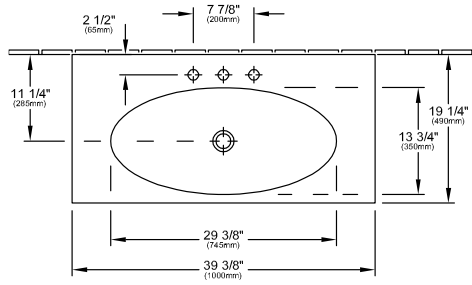


Model	6124AU
Width	39 3/8" inch
Height	6 7/8" inch
Depth	19 1/4" inch
Description	<p>Ground contact surface Sanitary porcelain La Belle vanity unit A584 and console legs A581 to match (see page 99 - 99) incl. unclosable grid drain with ceramic cover, incl. drain assembly, incl. fastening set for installation to the wall This vanity sink is made of finefire clay. The vanity sink is 39 3/8" (1000mm) x (490mm). The product is without overflow and 3 punched out faucet holes 1 3/8" (35 mm) 8" spread. The product is with ceramic plus. The vanity sink is Villeroy &amp; Boch model 6124AU. Code Compliance: UPC, IPC, NSPC, NPC Canada and others, meets and exceeds ASME A112.19.2/CSA B45.1 ASME A112.19.14 one year limited warranty waste diameter: 1 1/4" O.D. basin dimensions: 29 3/8" x 14" (745 x 355mm) ground contact surface for countertop installations Furniture programme LA BELLE to match</p>
Tap fitting / Tap hole remark	For 8" spread faucets
Overflow remark	without overflow
Material	Sanitary porcelain
Specification texts	<p>; Bathroom sink; Sanitary porcelain; Size: 39 3/8" x 6 7/8" x 19 1/4" (1000 x 175 x 490 mm); Rectangular; Ground contact surface; For 8" spread faucets; without overflow; La Belle vanity unit A584 and console legs A581 to match (see page 99 - 99); incl. unclosable grid drain with ceramic cover, incl. drain assembly, incl. fastening set for installation to the wall; This vanity sink is made of finefire clay. The vanity sink is 39 3/8" (1000mm) x (490mm). The product is without overflow and 3 punched out faucet holes 1 3/8" (35 mm) 8" spread. The product is with ceramic plus. The vanity sink is Villeroy &amp; Boch model 6124AU.; Code Compliance: UPC, IPC, NSPC, NPC Canada and others, meets and exceeds ASME A112.19.2/CSA B45.1 ASME A112.19.14; one year limited warranty; waste diameter: 1 1/4" O.D.; basin dimensions: 29 3/8" x 14" (745 x 355mm); ground contact surface for countertop installations</p>



# TECHNICAL DRAWINGS

## 6124AU



\* Suggested Dimension

